

VISUAL
APPROACH
CHART

AD ELEV 784FT
HEIGHTS RELATED TO
THR RWY09 ELEV 765FT
VAR 5° E (2020)

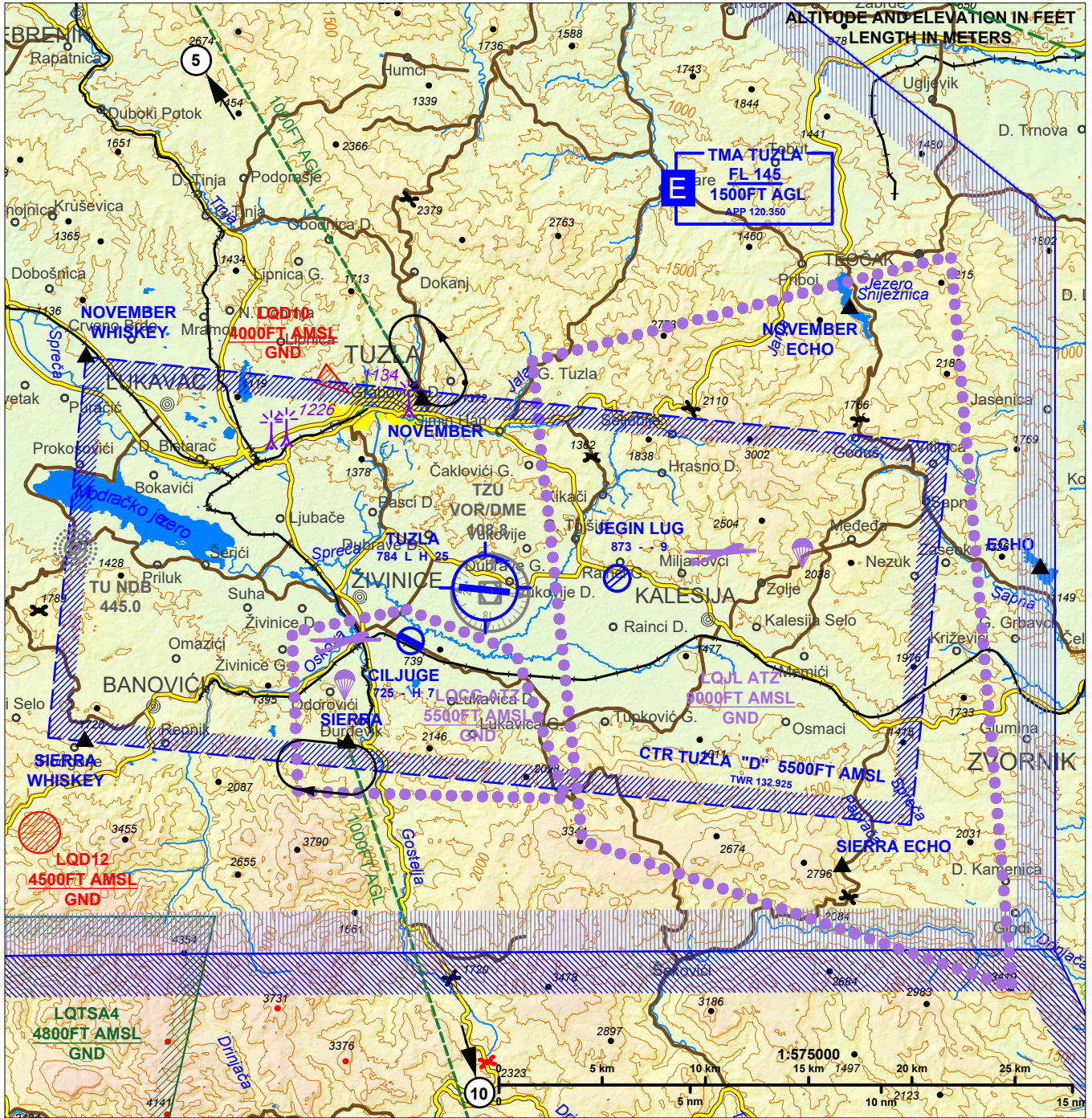
APP 120.350
TWR 132.925

FIC 135.575

TA
10000FT

ARP COORD
44° 27' 31.15" N
018° 43' 29.21" E

TUZLA (LQTSZ)



CHANGE: CORRECTED TYPE AND MARKING OF THE ZONE (LQR34>LQTSZ4)

REPORTING POINTS	COORDINATES	DEFINITION
NOVEMBER WHISKEY	44° 33' 39" N 018° 29' 25" E	Coal pit Lukavac
NOVEMBER	44° 32' 27" N 018° 41' 44" E	Football stadium
NOVEMBER ECHO	44° 34' 45" N 018° 57' 22" E	Lake Snježnica
ECHO	44° 27' 52" N 019° 04' 15" E	Lake Crveno (industrial landfill, artificial lake of red colour)
SIERRA ECHO	44° 20' 08" N 018° 56' 53" E	Monastery Paprača
SIERRA	44° 23' 30" N 018° 38' 55" E	South part of coal pit Đurđevik
SIERRA WHISKEY	44° 23' 36" N 018° 29' 18" E	Lake Podgorje

Two way radio communication mandatory.
Contact Tower at or before reporting point.
For latest informations consult relevant publications and NOTAMS

Special VFR minima:
VIS ≥ 1500M (FIXED WINGS), 800M (HEL); ceiling ≥ 500FT

CAUTION:
Power lines and obstacles are not shown

ATTENTION:
Bird concentration on and in the vicinity of RWY. Possibility of wildlife appearance in the vicinity of RWY early in the morning and late in the afternoon. Caution advised

THIS PAGE INTENTIONALLY LEFT BLANK